



# Butte County Association of Governments

---

## Unmet Transit Needs Assessment – 2019/2020



**Adopted May 23, 2019**

**For information or questions regarding this assessment, please contact**

***Butte County Association of Governments***

Butte County Association of Governments  
326 Huss Drive, Suite 150 Chico, CA 95928  
Phone (530) 809-4616 Fax (530) 879-2444

[www.bcag.org](http://www.bcag.org) [www.blinetransit.com](http://www.blinetransit.com)

# TABLE OF CONTENTS

<b>INTRODUCTION .....</b>	<b>1</b>
Executive Summary .....	1
Requirements.....	2
Background.....	3
<b>DEMOGRAPHIC INFORMATION .....</b>	<b>3</b>
Transit Dependent Groups .....	3
Demographic Data.....	4
Transit Dependency Indicators in Butte County .....	4
<b>ADEQUACY OF EXISTING TRANSIT SERVICES .....</b>	<b>7</b>
Overview .....	7
Description of Local Public Transit Services.....	7
FY 2018/19 B-Line Service Plan.....	7
B-Line Paratransit.....	16
Description of Other Transportation Services Available in Butte County .....	17
Adequacy of Transit Service for Transit Dependent Groups .....	17
<b>COMMUNITY OUTREACH.....</b>	<b>18</b>
<b>ANALYSIS OF COMMENTS RECEIVED .....</b>	<b>19</b>
Definitions of “Unmet Transit Needs” and “Reasonable to Meet” .....	19
Comments that are NOT defined as an “Unmet Transit Need” .....	20
Analysis Requirements and Assumptions.....	20
Analysis of Public Testimony .....	21
<b>UNMET TRANSIT NEEDS FINDINGS AND RECOMMENDATIONS .....</b>	<b>25</b>
Recommendations .....	25
Social Service Transportation Advisory Council Review .....	255

---

# Introduction

## Executive Summary, Requirements and Background

### Executive Summary

Each year, pursuant to the California state Transportation Development Act (TDA) law, the Butte County Association of Governments (BCAG) must identify any unmet public transit needs that may exist in Butte County in order to receive state funding. If unmet transit needs are found, a further determination must be made as to whether or not those needs are reasonable to meet.

The purpose of the Transit Needs Assessment is to document these needs and findings and identify the process in which Butte County Association of Governments (BCAG) conducted this assessment for Butte County.

BCAG is the Regional Transportation Planning Agency (RTPA) for Butte County, as designated by the Secretary of the Business Transportation & Housing Agency for the State of California. Since July 2005, BCAG has also been the administrator and operator for Butte Regional Transit, "B-Line", a consolidated public transit system serving the cities, town and county. The RTPA and transit agency are two separate functions of BCAG, with separate staff and separate budgets. The BCAG Joint Powers Agreement consolidates all administrative and operating responsibilities for public transit under the BCAG Board.

As a result of the consolidation, routes and fare structures better serve Butte County residents by improved service with timed transfers and consistent headways for ease of use, elimination of duplication between systems, a uniform fare structure and comprehensive customer service.

Based on public feedback during the Unmet Transit Needs workshops and public transit comment cards received, BCAG evaluates the system on an ongoing basis. As a result of the feedback received since the consolidation took effect, BCAG has continued to implement changes as able to.

During the 2010/11 fiscal year B-Line underwent multiple route and timing changes based upon the results of a Market Based Transit Study. Major changes included: an increase in service hours in Oroville, improved service to Kelly Ridge, the consolidation of routes 1, 6 and 10 in Chico into a single route (15) with increased frequency and the general improvement of connectivity of all routes. These changes led to an overall ridership increase of 11% in fiscal year 2011/12, which equated to a record 1,306,255 passengers on the B-Line.

Other significant system changes over the past several years included the addition of an early morning commuter route for Paradise as well as the addition of a midday route 20 to Oroville, both due to increased ridership demands. During the 14/15 year route 15s was divided into two bi-directional routes (14&17) to allow for more efficient service. Significant non-operational changes have included the installation of over fifty new bus stop shelters throughout the system, installation of schedule holders at all bus stops and visual/audio enunciators in all fixed route buses. During the 2013/14 fiscal year the B-Line Tracker was launched, which enables passengers to access real-time bus arrive time. During the 2014/15 FY B-Line went live on Google Maps. During the 2016/17 FY Map My Bus (the DoubleMap app) went live, which allows passengers to visually track their bus on a map and receive the arrival time at their stop.

BCAG/B-Line also partnered with the City of Oroville to construct a new Oroville Transit Center, located at Mitchell and Spencer Ave., which opened in November 2011. This transit center provides safe, covered seating, designated bus only pull-outs, driver and public restrooms and improved lighting and streetscape for Oroville transit users.

During the 2015/16 FY, the offices of BCAG/B-Line relocated to 326 Huss Drive, Chico. This new facility incorporates not only the administrative offices, but houses the entire transit operation. This includes the contracted services (currently provided by Transdev) for drivers, dispatchers and mechanics.

During the 2016/17 FY, service to the Chico Airport Industrial Park (Route 52) was established as part of a Low Carbon Transit Operations Program (LCTOP) grant.

Ridership on transit in general has been decreasing over the past few years. This is a nationwide problem and Butte County is not immune from that trend. Lower gas prices, combined with more affordable low-cost automobiles, have allowed more people the opportunity to own and operate personal cars. This combination has reduced the dependence on public transit of the lower income population, which traditionally makes up the largest percentage of transit users.

In the aftermath of the November 2018 Camp Fire, several routes were modified as a result of the displacement of people. As we head into FY19/20 it is possible that additional changes caused by the Camp Fire may occur, outside the scope of the Unmet Transit Needs process.

### **Findings for FY 2019/20**

After analysis of all testimony received during the 2018/19 fiscal year Unmet Transit Needs process, BCAG finds that there are no Unmet Transit Needs that are Reasonable to Meet.

## **Requirements**

State law, as presented in the Transportation Development Act, requires BCAG to ensure that reasonable needs are met before TDA funds can be used for non-transit purposes. In conducting the annual transit needs assessment, BCAG's role is to perform the following:

- 1) Establish and consult with the Social Services Transportation Advisory Council.

- 2) Assess the size and location of groups likely to be transit-dependent or transit-disadvantaged; such as the elderly, disabled and persons of limited means.
- 3) Assess the adequacy of existing public transportation services or the potential for new service to meet the needs of these groups.
- 4) Hold at least one unmet transit needs hearing to gather comments on needs that exist.
- 5) Adopt findings about unmet transit needs by the Butte County Association of Governments Board of Directors.

## Background

The Transportation Development Act (TDA) was signed by the Governor on November 4, 1971 and became effective July 1, 1972. Several bills have amended the TDA over time. The TDA provides a State funding source for use by local jurisdictions at the county level to improve existing public transportation and encourage regional public transportation coordination.

In Butte County, this source can also provide funding for local street and road projects when certain conditions are met. The main purpose and priority of TDA, however, is to provide funding for public transportation. Even though BCAG's Unmet Transit Needs findings are made on an annual basis, the assessment process continues throughout the year. Comment cards are placed on all buses and telephone calls and e-mails are received and recorded throughout the year.

## Chapter 2

# Demographic Information

## Transit Dependent Groups and Demographic Data

### Transit Dependent Groups

As per the Public Utilities Code Section 99401.5, an annual assessment is required to determine the size and distribution of groups likely to be transit-dependent or transit-disadvantaged. Transit dependency is generally defined as dependency upon public or private transportation services by persons that are either unable to operate a vehicle, or do not have access to a vehicle. The elderly, youth, persons with disabilities and low-income households are more likely to be transit-dependent than the general population.

For the purposes of this document elderly are considered to be individuals age 65 years old and older and persons of limited means are considered to be those with incomes below the poverty threshold as defined by the federal government.

## Demographic Data

The determination of the size and location of identifiable groups likely to be transit dependent is based on information currently available from the 2010 census as well as 2017 population estimates. BCAG is the U.S. Census designated Affiliate Data Center for Butte County. This data is important to this analysis because studies have shown that age and income have a high correlation with automobile usage and transit dependency. Persons age 65 and over as well as youth are separated as a subset of the total population figures. These individuals are more likely to use transit services based solely on their age and also qualify for reduced fares.

Table 1: TRANSIT DEPENDENT INDICATORS - Select Census Designated Places (CDPs)

City, County, or Census Designated Place	Population Estimate	Percentage of Population Ages 5-19 and 65 and above	*Percentage of Population Below Poverty Level
<i>Biggs</i>	2,010	34%	18%
<i>Butte County</i>	221,578	35%	13%
<i>Concow</i>	539	37%	7%
<i>Durham</i>	5,743	37%	4%
<i>Chico</i>	87,517	31%	14%
<i>Cohasset</i>	808	33%	6%
<i>Forest Ranch</i>	1,064	<b>45%</b>	6%
<i>Gridley</i>	6,584	35%	16%
<i>Magalia</i>	11,467	<b>41%</b>	12%
<i>Oroville East</i>	8,782	<b>42%</b>	9%
<i>Oroville South</i>	6,058	36%	<b>25%</b>
<i>Oroville</i>	16,015	34%	<b>19%</b>
<i>Thermalito</i>	6,911	37%	<b>24%</b>
<i>Palermo</i>	5,419	38%	<b>20%</b>
<i>Paradise</i>	26,246	39%	10%
<i>Yankee Hill</i>	242	<b>46%</b>	<b>22%</b>

Data Sources: 2010-2014 American Community Survey population and age data (S0101) and poverty data (DP03).

### Transit Dependency Indicators in Butte County

The purpose of this table is to document population percentages in census designated places in Butte County that have groups that are transit dependent and transit disadvantaged. This information will help BCAG with its ongoing transit planning efforts.

**Age Indicators (40% and above)** - Table 1 identifies transit dependent groups from ages 5-19 and ages 65 and above by population percentages. These census designated places with high percentages of aged population are highlighted in this table by bold and large print.

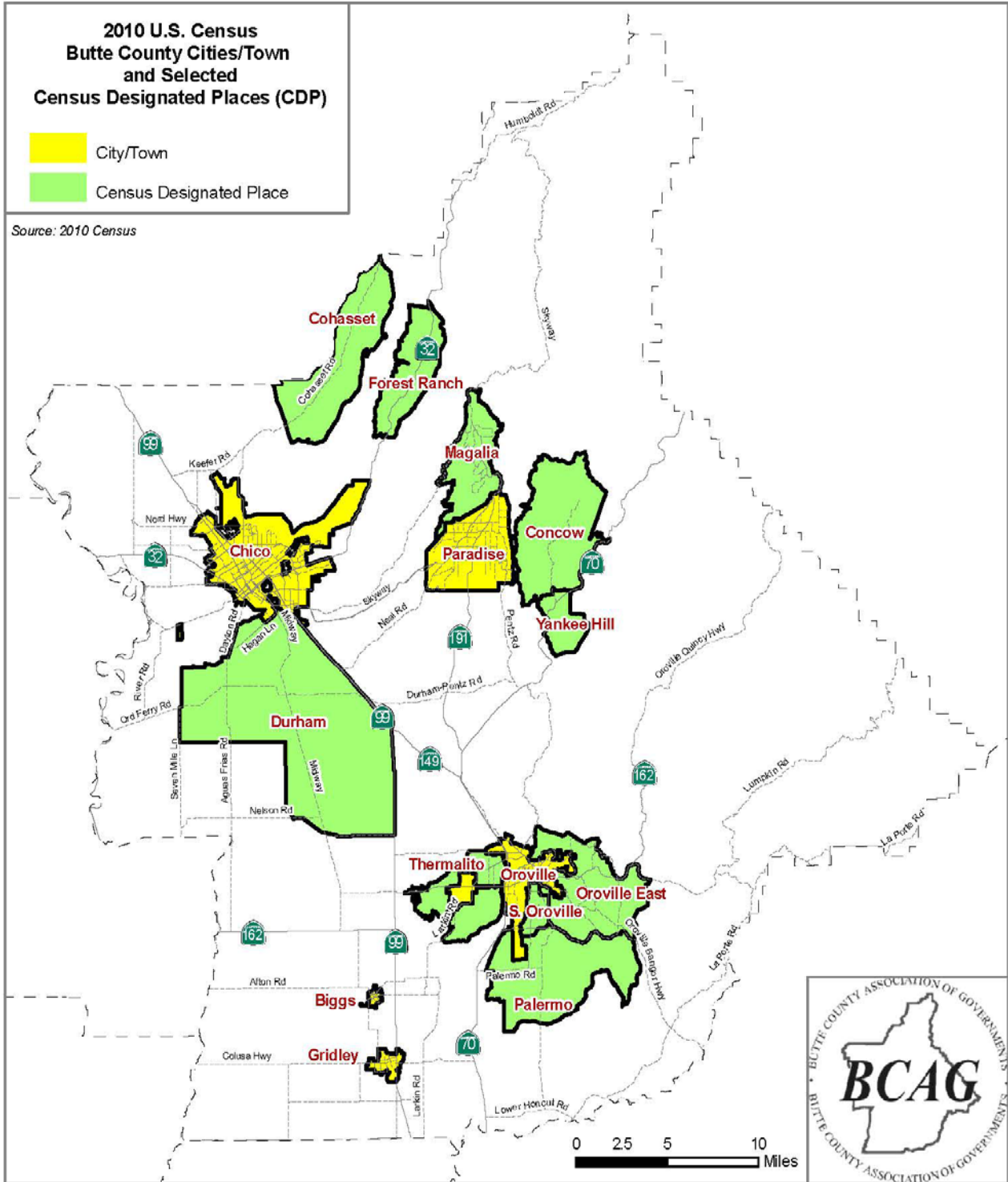
**Poverty Indicators (19% and above)** - Table 1 identifies transit dependent families that are at poverty levels\* by census designated places. These poverty indicators are highlighted in this table by bold and large print.

*\*Following the Office of Management and Budget's (OMB's) Directive 14, the Census Bureau uses a set of money income thresholds that vary by family size and composition to detect who is poor. If the total income for a family or unrelated individual falls below the relevant poverty threshold, then the family or unrelated individual is classified as being "below the poverty level."*

**2010 U.S. Census  
Butte County Cities/Town  
and Selected  
Census Designated Places (CDP)**

- City/Town
- Census Designated Place

Source: 2010 Census





---

## Adequacy of Existing Transit Services

### Overview

BCAG is required to analyze the adequacy of the existing public and specialized transportation services including privately and publicly provided services as per the Transportation Development Act, P.U.C. Section 99401.5.

### Description of Local Public Transit Services

FY 2018/19 B-Line Service Plan

All transit information and maps can be found at [www.blinetransit.com](http://www.blinetransit.com).

#### Fixed Route Services

Six intercity fixed-routes are provided on the B-Line. They are summarized below.

**Route 20 Chico – Oroville.** This intercity route operates between Chico and Oroville seven days a week. Weekday service begins at 5:50 AM and ends at 8:00 PM. Weekend service begins at 7:50 AM and ends at 6:00 PM. Weekday headways on Route 20 are 60 minutes peak, and 120 minutes midday; and weekend headways are 120 minutes. Total round-trip between Chico and Oroville is approximately one hour and 50 minutes with a layover in Oroville.

The major stops and timepoints on Route 20 are: Chico Transit Center, Fir Street Park and Ride, Forest Ave Xfer (WalMart & Bank), Butte County Administration and Oroville Transit Center (Mitchell & Spencer).

**Route 30 Oroville – Gridley – Biggs.** Route 30 operates between Oroville and Biggs with stops in Palermo and Gridley, Monday through Saturday. Weekday service begins in Oroville at 7:45 AM and ends in Oroville at 4:50 PM. Saturday service begins at 8:47 AM and ends at 5:00 PM. Weekday headways are approximately four hours and Saturday headways are 180 minutes. There is a five-minute layover in Biggs and vehicles go out of service in Oroville between each return trip. Total round-trip travel time between Oroville and Biggs is approximately one hour and 40 minutes.

The major stops and timepoints on Route 30 are: Oroville Transit Center (Mitchell & Spencer), Lincoln & Palermo (Palermo), Heritage Oaks Mall (Gridley) and 6<sup>th</sup> and B Streets in Biggs.

**Route 31 Paradise – Oroville.** Route 31 provides one morning trip and one evening trip between Paradise and Oroville on weekdays only. The morning trip begins at the Paradise Transit Center at 6:45 AM and arrives at the Oroville Transit Center (Mitchell & Spencer) at 7:33 AM. The evening trip leaves the Oroville Transit Center at 5:05 PM and ends in Paradise at 5:56 PM. The total travel time between Paradise and Oroville is approximately 50 minutes. Vehicles will go out of service at the end of each trip.

Major stops and timepoints on Route 31 are: Almond & Birch (Paradise), Clark & Wagstaff (Paradise), Clark & Pearson (Paradise), County Public Works (Oroville) and the Oroville Transit Center (Mitchell & Spencer).

**Route 32 Gridley – Chico.** Route 32 provides one morning trip and one evening trip between Gridley and Chico on weekdays only. The morning trip begins in Biggs at 6:40 AM, serves Gridley at 6:51 AM and arrives at the Chico Transit Center at 7:40 AM. The evening trip leaves the Chico Transit Center at 5:20 PM and ends in Biggs at 6:20 PM. The total travel time between Gridley and Chico is approximately 60 minutes. Vehicles will go out of service at the end of each trip.

Major stops and timepoints on Route 32 are: City Hall - 6<sup>th</sup> & C St (Biggs), Spruce & SR 99 (Gridley), Midway & Durham Dayton Hwy (Durham), and the Chico Transit Center.

**Route 40 Paradise – Chico.** Route 40 provides service between Paradise and Chico, seven days a week. Weekday service (Eastbound) begins in Chico at 6:50 AM and ends in Paradise at 7:03 PM and weekday service (Westbound) begins in Paradise at 6:00 AM and ends in Chico at 7:26 PM. Weekday headways are approximately 120 minutes, with more frequent service during the evening peak hours. Saturday service (Eastbound) begins at 7:50 AM in Chico and ends at 7:03 PM in Paradise and Saturday service (Westbound) begins at 8:44 AM in Paradise and ends at 6:00 PM in Chico. Sunday service (Eastbound) begins at 9:50 AM in Chico and end at 5:03 PM in Chico and Sunday service (Westbound) begins at 10:44 AM in Paradise and end at 6:00 PM in Chico. Round trip travel times between Paradise and Chico are approximately an hour and 52 minutes with a 10-minute layover scheduled in Paradise. For most runs, Route 40 alternates with Route 41.

Major stops and timepoints on Route 40 are: Chico Transit Center, Forest Ave Xfer @ WalMart (Chico), Almond & Birch (Paradise) and Skyway & Wagstaff (Paradise).

**Route 41 Magalia – Chico.** Route 41 provides service between Magalia and Chico, weekdays. Eastbound service begins in Chico at 7:20 AM and ends in Magalia at 6:24 PM and the Westbound service begins in Magalia at 5:50 AM and ends in Paradise at 6:53 PM. Headways are approximately 130 minutes, with some variation during the peak hours. Round trip travel times between Magalia and Chico are approximately two hours and 10 minutes. For most runs, Route 41 alternates with Route 40. Saturday service is available between Magalia and Paradise on three round trip loops, one in the morning, one midday and one in late afternoon.

Major stops and timepoints on Route 41 are: Skyway & Colter (Paradise Pines), Lakeridge @ Holiday Market (Magalia), Skyway & Wagstaff (Paradise), Almond & Birch (Paradise), Forest Ave Xfer (WalMart & Bank) (Chico) and the Chico Transit Center.

In Chico, there are eleven local fixed routes. It is important to note that most routes in Chico are timed to depart the Chico Transit Center at approximately 0:50 minutes past the hour in the mornings and 0:10 minutes past the hour in the afternoons. Also, many of the routes in the system are through-routed (interlined) with each other to improve connectivity and reduce the number of vehicles that are required to operate service. Each of the Chico routes is summarized below.

**Route 2 – Mangrove.** Route 2 provides service between the Chico Transit Center and Ceres & Lassen via Mangrove and Cohasset. Service is provided every 30-minutes during the peak morning hours and every 60-minutes at all other times of the day. Monday through Friday service begins at 6:15 AM at Ceres & Lassen and ends at Ceres & Lassen at 8:34 PM. Saturday service begins at 8:15 AM at Ceres & Lassen and ends at 7:00 PM at the Chico Transit Center. Round trip running time on Route 2 is approximately 45 minutes with layover time at the Chico Transit Center. During peak times Route 2 is through-routed with Route 7 at Ceres & Lassen.

Major stops and timepoints along Route 2 are: The Chico Transit Center, 5<sup>th</sup> & Mangrove, Parmac & Rio Lindo, North Valley Plaza and Ceres & Lassen.

**Route 3 – Nord/East.** Route 3 provides service between the Chico Transit Center and North Valley Plaza via Nord and East. Service is provided every 60-minutes at most times of the day with the exception of several AM peak-hour times where service increases to 30-minutes. Monday through Friday service on Route 3 begins at 6:18 AM at North Valley Plaza and ends at 9:00 PM at the Chico Transit Center. Saturday service begins at 8:50 AM at North Valley Plaza and ends at 7:00 PM at the Chico Transit Center. Round trip running time on Route 3 is 49 minutes with layover time at the Chico Transit Center. Route 3 is through-routed with Route 4 at North Valley Plaza.

Major stops and timepoints on Route 3 are: Chico Transit Center, West 8<sup>th</sup> Avenue & Nord, East & Nord, East & Esplanade and North Valley Plaza.

**Route 4 – First/East.** Route 4 provides service between the Chico Transit Center and North Valley Plaza via E. First, Manzanita and East. Service is provided every 60-minutes at most times of the day with limited 30-minute service during peak hours. Monday through Friday service begins at 6:15 AM at North Valley Plaza and ends at 9:00 PM at the Chico Transit Center. Saturday service begins at the Chico Transit Center at 8:50 AM and ends at the Chico Transit Center at 7:00 PM. Round trip running time on Route 4 is 49 minutes with layovers at the Chico Transit Center and North Valley Plaza. Route 4 is through-routed with Route 3 at North Valley Plaza.

Major stops and timepoints on Route 4 are: Chico Transit Center, Chico Junior HS, First & Longfellow, Pleasant Valley HS and North Valley Plaza.

**Route 5 – East 8th Street.** Route 5 provides service between the Chico Transit Center and the Chico Mall via E. 8<sup>th</sup>/E. 9<sup>th</sup> and Forest. Service is provided every 60-

minutes most of the time on weekdays with limited 30 minute AM and PM peak hour service and every 60-minutes on Saturdays. Monday through Friday service begins at 6:15 AM at the Forest Ave Xfer (Bank) and ends at 8:34 PM at the Forest Ave Xfer (Bank). Saturday service begins at 8:15 AM at the Forest Ave Xfer (Bank) and ends at 7:00 PM at the Chico Transit Center. Round trip running time on Route 5 is 49 minutes with a layover at the Chico Transit Center.

Major stops and timepoints on Route 5 are: Chico Transit Center, 9<sup>th</sup> Street & Pine, 8<sup>th</sup> Street and Highway 32, 8<sup>th</sup> Street and Olive and the Forest Ave Xfer (Bank).

**Route 7 – Courthouse/East.** Route 7 provides service between North Butte County Courthouse and Pleasant Valley High School via E. 20<sup>th</sup> St, Forest Ave, Bruce and Manzanita to Ceres/Lassen. Route 7 is the only route in Chico that does not provide service to the Chico Transit Center. Monday through Friday service on Route 7 provides three runs, peak AM and PM hours, and one mid-day run. Service on Monday through Friday begins at 6:45 AM at the North Butte County Courthouse and ends at 5:30 PM at Ceres and Lassen. Route 7 is through-routed with Route 2 at Ceres and Lassen. Round trip running time on Route 7 is 51 minutes.

Major stops and timepoints on Route 7 are: Forest Ave Xfer (Bank), Marsh Junior HS, Pleasant Valley HS and, Ceres & Lassen.

**Route 8 – Nord.** Route 8 is a student shuttle that directly connects CSU-Chico with student neighborhoods northwest of the campus. Route 8 also provides a connection to other routes at the Chico Transit Center at 2<sup>nd</sup> and Salem. Route 8 provides 30-minute service Monday through Friday only while CSU-Chico is in session. Monday through Friday service begins at 7:34 AM at Nord & University Village Apt. and ends at 9:34 PM at the Chico Transit Center. Friday service ends at 4:04 PM at the Chico Transit Center. Round trip running time on Route 8 is 24 minutes and there is no scheduled layover time between runs. Route 8 is through-routed with Route 9 at the Chico Transit Center.

**Route 9 – Oak/Warner/Cedar.** Route 9 is also a student shuttle that directly connects CSU-Chico with student neighborhoods north and south of the campus. Route 9 also provides a connection to other routes at the Chico Transit Center at 2<sup>nd</sup> & Salem. Like Route 8, Route 9 provides 30-minute service Monday through Friday only while CSU-Chico is in session. Monday through Friday service begins at 7:33 AM at 4<sup>th</sup> Avenue & Cedar and ends at 10:01 PM at the Chico Transit Center. Friday service ends at 4:01 PM at the Chico Transit Center. Round trip running time on Route 9 is 27 minutes and there is no scheduled layover time between runs. Route 9 is through-routed with Route 8 at the Chico Transit Center.

**Route 9C- Cedar Loop.** Route 9C is a limited service loop that only operates when the regular Route 9 (Student Shuttle) is not running, including: Fridays after 4 PM (year round), Saturdays year round and CSUC breaks. Friday afternoon service begins at 5:10 PM at the Chico Transit Center and ends at 8:24 PM at the Chico Transit Center. Monday through Friday service, when the regular Route 9 is not running, begins at 7:50 AM at the Chico Transit Center and ends at 8:24 PM at the Chico Transit Center. Saturday service begins at 8:30 AM at the Chico Transit Center and ends at 6:24 PM at the Chico Transit Center.

**Route 14 – Park/Forest/MLK.** Route 14 provides service from the Chico Transit Center to Park Ave/MLK/Forest Ave. Route 14 services E 20<sup>th</sup> St & Forest & MLK in a clockwise loop. At the Chico Transit Center, Route 14 interlines with Route 15. Monday through Friday Route 14 provides 20-minute service during AM and PM peak hours and 30-minute service throughout the rest of the day and 60 minutes in the evenings. Saturday Route 14 provides 60-minute service. Round trip running time on Route 14 is approximately 35 minutes for each loop. Route 14 Monday through Friday service begins at 6:18 AM at the Forest Ave Xfer (WalMart) and ends at 9:45 PM at Chico Transit Center. Saturday service begins at 7:50 AM at Chico Transit Center and ends at 6:45 PM at Chico Transit Center.

Major stops and timepoints on Route 14 are: Chico Transit Center, 20<sup>th</sup> St & E. Park, Forest Ave Xfer (WalMart), and E. Park & MLK.

**Route 15 – Esplanade/Lassen.** Route 15 provides service along the Esplanade and Lassen Ave corridor; between Ceres/Lassen and the Chico Transit Center. Monday through Friday Route 15 provides 20-minute service during AM and PM peak hours and 30-minute service throughout the rest of the day and 60 minutes in the evenings. Saturday Route 15 provides 60-minute service. Round trip running time on Route 15 is approximately 45 minutes for each loop. Route 15 Monday through Friday service begins at 6:15 AM at Ceres & Lassen and ends at 9:34 PM at Ceres & Lassen. Saturday service begins at 7:50 AM at the Chico Transit Center and ends at 6:34 PM at Ceres & Lassen. Route 15 is through routed with Route 14 at the Chico Transit Center.

Major stops and timepoints on Route 15 are: Chico Transit Center, Esplanade & 5<sup>th</sup>, Esplanade & East, Lassen & Cohasset and Ceres & Lassen.

**Route 16 – Esplanade/SR 99.** Route 16 provides service from the Chico Transit Center to Esplanade and SR 99. Route 16 provides 60 minute service Monday through Saturday. Round trip running time on Route 16 is 52 minutes for each loop. Monday through Friday service begins at 6:55 AM at Esplanade & SR 99 and ends at 6:55 PM at Esplanade & SR 99. Saturday service begins at 7:55 AM at Esplanade & SR 99 and ends at 5:55 PM at Esplanade & SR 99. Route 16 is through routed with Route 17 at the Chico Transit Center.

Major stops and timepoints on Route 16 are: Chico Transit Center, Esplanade & 5<sup>th</sup>, Rio Lindo & Parmac, East & Esplanade and Esplanade and SR 99.

**Route 17 – Park/MLK/Forest.** Route 17 provides service from the Chico Transit Center to Park Ave/MLK/Forest Ave. Route 17 services E 20<sup>th</sup> St & MLK & Forest in a counter-clockwise loop. At the Chico Transit Center, Route 17 interlines with Route 16. Route 17 provides 60-minute service throughout the entire day. Round trip running time on Route 17 is 35 minutes for each loop. Route 17 Monday through Friday service begins at 7:30 AM at Chico Transit Center and ends at 6:05 PM at Chico Transit Center. Saturday service begins at 8:30 AM at Chico Transit Center and ends at 6:05 PM at Chico Transit Center.

Major stops and timepoints on Route 17 are: Chico Transit Center, 20<sup>th</sup> St & E. Park, E. Park & MLK, and Forest Ave Xfer (Bank).

Both Oroville and Paradise also have local fixed route service. These services are summarized below.

**Route 24 – Thermalito.** Route 24 provides service from the Oroville Transit Center (Mitchell & Spencer) along Mitchell and Feather River Blvd to Thermalito and Butte County Public Works/Administration. Route 24 provides 60-minute service Monday through Friday with a 1 hour layover midday. Service begins at 6:34 AM at the Oroville Transit Center (Mitchell & Spencer) and ends at 7:30 PM at the Oroville Transit Center (Mitchell & Spencer). Route 24 is timed to connect with the Route 20 at Butte County Public Works for transfers to Chico. Total round trip running time on Route 24 is 36 minutes. Route 24 is through routed with Route 27.

Major stops and timepoints on Route 24 are: Oroville Transit Center (Mitchell & Spencer), 14<sup>th</sup> & Grand and Public Works/Administration.

**Route 25 – Oro Dam.** Route 25 provides service from the Oroville Transit Center (Mitchell & Spencer) to the WalMart and Downtown. Route 25 provides 60-minute service Monday through Friday with a 1 hour layover midday. Service begins at 6:12 AM at the Oroville Transit Center (Mitchell & Spencer) and ends at 6:50 PM at the Oroville Transit Center (Mitchell & Spencer). Total round trip running time on Route 25 is 18 minutes. Route 25 is through routed with Route 26.

Major stops and timepoints on Route 25 are: Oroville Transit Center (Mitchell & Spencer) and WalMart.

**Route 26 – Olive Highway/Kelly Ridge.** Route 26 provides service from the Oroville Transit Center (Mitchell & Spencer) along Olive Highway to Gold Country Casino and Kelly Ridge as well as serving the Orange and Acacia area. Monday through Friday Route 26 provides 60-minute service to South Oroville and Gold Country Casino and alternating 120 minute service to Kelly Ridge (5 trips per day) and the Orange & Acacia area (6 trips per day). Service begins at 6:33 AM at the Oroville Transit Center (Mitchell & Spencer) and ends at 6:21 PM at the Oroville Transit Center (Mitchell & Spencer). Total running time for Route 26 is between 28 and 34 minutes depending on which alternate loop it is running. Route 26 is through routed with Route 25.

Major stops and timepoints on Route 26 are: Oroville Transit Center (Mitchell & Spencer), D St & Meyers, Gold Country Casino, Kelly Ridge & Royal Oaks, Oroville Hospital and Orange & Acacia.

**Route 27 – South Oroville.** Route 27 provides service from the Oroville Transit Center through South Oroville to Las Plumas High School. Route 27 provides 60-minute service Monday through Friday, with a 1 hour layover at 10 AM. Monday through Friday service begins at 7:10 AM at the Oroville Transit Center (Mitchell & Spencer) and ends at 6:50 PM at the Oroville Transit Center (Mitchell & Spencer). Total running time for Route 27 is 20 minutes. Route 27 is through routed with route 24.

Major stops and timepoints on Route 27 are: Oroville Transit Center (Mitchell & Spencer), Las Plumas High School and Meyers & D St.

## Days and Hours of Operation and Fleet Requirement

The following table summarizes the services that will be provided on B-Line and shows the days and hours of operation of all fixed route services. The table also shows how many buses are required for each route (fleet requirement) and peak-hour headways.

**Figure 1: Hours of Operation and Fleet Requirements**

Route	Hours of Operation	Fleet Requirement	Peak Hour Headway
<b>Intercity Routes</b>			
Route 20 Chico – Oroville	Monday – Friday 5:50 AM – 8:00 PM Saturday/Sunday 7:50 AM – 6:00 PM	3	M-F: 60 min. Sat/Sun: 120 min.
Route 30 Oroville – Gridley – Biggs	Monday – Friday 7:45 AM – 4:50 PM Saturday 8:47 AM – 5:00 PM	1	M-F: 240 min. Sat: 120 min.
Route 31 Paradise – Oroville	Monday – Friday One round-trip: 6:45 AM – 7:33 AM and 5:05 PM – 5:56 PM	0*	M-F: One round-trip
Route 32 Gridley – Chico	Monday – Friday One round-trip: 6:40 AM – 7:40 AM and 5:20 PM – 6:20 PM	1	M-F: One round-trip
Route 40 Paradise – Chico	Monday – Friday 6:00 AM – 7:26 PM Saturday 7:50 AM – 7:03 PM Sunday 9:50 AM – 6:00 PM	3	M-F: 120 min. Sat/Sun: 120 min.
Route 41 Paradise Pines – Chico	Monday – Friday 5:50 AM – 6:53 PM Saturday 9:45 AM – 6:03 PM	1	M-F: 120 min. Sat: three trips in Magalia loop only
Route	Hours of Operation	Fleet Requirement	Peak Hour Headway
<b>Local Chico Routes</b>			
Route 2 Mangrove**	Monday – Friday 6:15 AM – 8:34 PM Saturday 8:15 AM – 7:00 PM	2	M-F: 60 min. Sat: 60 min.
Route 3 Nord/East**	Monday – Friday 6:18 AM – 9:00 PM Saturday 8:50 AM – 7:00 PM	2	M-F: 30 min. Sat: 60 min.
Route 4	Monday – Friday	2	M-F: 30 min.

First/East**	6:15 AM – 9:00 PM Saturday 8:50 AM – 7:00 PM		Sat: 60 min.
Route 5 E. 8 <sup>th</sup> Street	Monday – Friday 6:15 AM – 8:34 PM Saturday 8:15 AM – 7:00 PM	2	M-F: 30 min. Sat: 60 min.
Route 7 Courthouse/East**	Monday – Friday 6:45 AM – 5:30 PM	1	M-F: 60 min.
Route 8 Nord**	Monday – Thursday 7:34 AM – 9:34 PM Friday 7:34 AM – 4:04 PM	1	M-F: 30 min.
Route 9 Oak/Warner/Cedar* *	Monday – Thursday 7:33 AM – 10:01 PM Friday 7:33 AM – 4:01 PM	1	M-F: 30 min.
Route 14 Park/Forest/MLK	Monday – Friday 6:18 AM – 9:45 PM Saturday 7:50 AM – 6:45 PM	3	M-F: 20 min. Sat: 30 min.
Route 15 Esplanade/Lassen	Monday – Friday 6:15 AM – 9:34 PM Saturday 7:50 AM – 6:34 PM	3	M-F: 20 min. Sat: 30 min.
Route 16 Esplanade/SR99	Monday – Friday 6:55 AM – 6:55 PM Saturday 7:55 AM – 5:55 PM	2	M-F: 60 min. Sat: 60 min.
Route 17 Park/MLK/Forest	Monday – Friday 7:30 AM – 6:05 PM Saturday 8:30 AM – 6:05 PM	2	M-F: 20 min. Sat: 30 min.
<b>Local Oroville/Paradise Routes</b>			
24 Thermalito *Interlined with 27	Monday – Friday 6:34 AM – 7:30 PM	0.5	M-F: 60 min.
25 Oro Dam *Interlined with 26	Monday – Friday 6:12 AM – 6:50 PM	0.5	M-F: 60 min.
26 Olive Highway *Interlined with 25	Monday – Friday 6:33 AM – 6:21 PM	0.5	M-F: 60 min.
27 South Oroville *Interlined with 24	Monday – Friday 7:10 AM – 6:50 PM	0.5	M-F: 60 min.

\* Route 31 is through-routed with Route 30 and therefore does not require an extra vehicle.

\*\* Routes 2, 3, 4 and 7 are all through-routed with each other at various times. Routes 8 and 9 are through-routed with each other.



## Estimated Annual Fixed Route Vehicle Service Hours

Figure 2 provides an estimate of annual vehicle service hours for all B-Line fixed routes. Vehicle service hours are defined as all the time buses are in service during established hours and over established routes, or as specifically authorized by BCAG. All time during which buses are not in service for the purpose of transporting passengers, including but not limited to platform time, driving buses to or from Contractor facilities for any reason (maintenance, fueling, driver relief, etc.) and all other vehicle operations for purposes other than passenger transportation, do not constitute vehicle service hours.

**Figure 2: Estimated Annual Fixed Route Vehicle Service Hours**

Route	Estimated Annual Vehicle Service Hours
<b>Intercity Routes</b>	
20 Chico – Oroville	7,400
30 Oroville – Gridley – Biggs	1,671
31 Paradise – Oroville	475
32 Gridley – Chico	514
40 Paradise – Chico	5,256
41 Paradise Pines – Chico	4,041
<b>Intercity Subtotal</b>	<b>19,357</b>
<b>Local Chico Routes</b>	
2 Mangrove	4,420
3 & 4 Nord/East-First/East	9,557
5 E. 8 <sup>th</sup> Street	5,250
7 Bruce/Manzanita	1,863
8 & 9 Nord – Warner/Oak	3,435
9C Warner/Oak (Non-Student Shuttle)	407
14 & 17 Park/MLK/Forest	9,599
15 & 16 Esplanade/Lassen/SR 99	10,028
<b>Local Chico Routes Subtotal</b>	<b>44,560</b>
<b>Local Oroville Routes</b>	
24 & 27 Thermalito & Las Plumas	2,981
25 & 26 Central Oroville & Kelly Ridge	2,891
<b>Local Oroville Routes Subtotal</b>	<b>5,872</b>
<b>TOTAL Estimated Fixed Route Annual Vehicle Service Hours</b>	<b>69,789</b>

### **\*\*Chico Airport Express (Route 52)\*\***

The Chico Airport Express – Route 52 began service on February 27, 2017. Route 52 begins and ends in Oroville, with multiple round trips between downtown Chico and the Chico Airport, Monday through Friday. **NOTE:** For the past several years, transit service to the Chico Airport has been a regular request during the annual Unmet Transit Needs process. However, statistical analysis has not shown it would meet the required farebox recovery ratio and as such transit operating funds could not be used to implement that service. Recently, staff was successful in obtaining

the LCTOP grant to fully cover the operating cost of this service. The LCTOP grants will cover the costs of the Chico Airport Route Pilot service for up to three years, of which is currently into its second year. It will be evaluated regularly and if successful could be incorporated into the regular Butte Regional Transit service schedule.

## **B-Line Paratransit**

The B-Line Paratransit service has combined the previous Paratransit services provided in Chico, Paradise and Oroville into one service. B-Line Paratransit provides complementary Paratransit service in accordance with the Americans with Disabilities Act. B-Line Paratransit also offers Dial-a-Ride service for seniors and persons with disabilities. To be eligible for the service, riders must be 70 years of age or older or have an impairment that prevents using the fixed route system.

The service area of B-Line Paratransit includes the Chico Urban Area, the entire Town of Paradise and portions of Paradise Pines, Wilderness Way off of Pentz Road, and the greater Oroville area, including the City of Oroville and portions of unincorporated Butte County. Services on B-Line Paratransit are operated during the same time as the fixed route services. Services are operated during the following hours:

- Monday through Friday: 5:50 AM to 10:00 PM
- Saturday: 7:00 AM to 10:00 PM
- Sunday: 7:50 AM to 6:00 PM

BCAG developed Paratransit policies and procedures that took effect on July 1, 2007. The primary purpose is to comply with Federal Transit Administration (FTA) regulations and the Americans with Disabilities Act (ADA). As part of this process, BCAG defined new Paratransit boundaries to ensure ADA compliance and implemented a new eligibility certification process. The complete B-Line Paratransit Policies and Procedures are posted on BCAG's website at [www.bcag.org](http://www.bcag.org).

### **Estimated Annual Vehicle Service Hours for Paratransit: 51,000**

(Actual hours vary by service area according to the fixed route schedule in that city).

## **Legal Holidays**

Both fixed route and Paratransit service shall not be provided on the following six (6) legal holidays:

1. New Year's Day
2. Memorial Day
3. Independence Day (July 4)
4. Labor Day
5. Thanksgiving Day
6. Christmas Day

## Description of Other Transportation Services Available in Butte County

### City of Gridley

The City of Gridley operates the Gridley Golden Feather Flyer paratransit service within the Gridley Urban Area. Service hours are Monday through Friday, 8:00 AM to 6:00 PM.

### Amtrak Rail Service

Amtrak has limited daily rail service in Butte County from Seattle to Los Angeles, only stopping in Chico southbound twice in the very early AM hours. There is no checked baggage service and tickets cannot be purchased at the Chico location. Amtrak Thruway Service provides motorcoach/bus service as well. Schedules vary and are available by phone at 1-800-USA-RAIL. The Chico Amtrak station is located at West 5<sup>th</sup> and Orange Streets.

### Greyhound Bus Service

Greyhound provides service for Butte County residents to destinations throughout California and most of the country. There are two ticket centers, one in Chico at 450 Orange Street and one in Oroville at Tom's Sierra Chevron, 890 Oro Dam Blvd. Greyhound has two trips per day, seven days a week going south to Marysville and Sacramento and two trips per day going north to Redding.

### Other Transportation

Privately owned taxi cab services, limousine services, airport shuttle services and non-emergency medical transporters are available in Butte County. Glenn Ride offers Monday-Saturday services between Butte County and Glenn County with pick-up points in Chico.

## Adequacy of Transit Service for Transit Dependent Groups

In 2006, 2010 and 2015 BCAG implemented significant revisions to specific routes in the system in an effort to remedy timing and operational issues. BCAG is continually evaluating the system to improve performance and makes minor route revisions as necessary, which are reflected in the schedule.

BCAG manages a Coordinated Transportation Working Group (CTWG) that includes staff from social service agencies throughout the County. One of the main purposes of this group is to coordinate with other agencies in Butte County to provide needed transportation services. During the 2007/08 work program, BCAG developed a Public Transit – Human Services Transportation Coordinated Plan in consultation with the SSTAC and CTWG. Key stakeholders included Peg Taylor Center, Independent Living Services of Northern California, Department of Rehabilitation, Butte County Behavioral Health, City of Chico, Chico Community Shelter Partnership, Butte County Department of Employment and Social

Services, Passages Adult Resource Center, Merit Medi-Trans, Work Training Center and Feather River Tribal Health.

The primary purpose of the Plan is to ensure communication between the various agencies which provide some type of transportation services to those individuals who require assistance. An analysis of existing services was made as well as project recommendations that agencies may apply for grant funding for toward assisting in coordinated efforts.

BCAG completed a Market Based Transit Study in 2010. This study was an in-depth analysis of the B-Line fixed route system which resulted in several major service changes and improvements. The study provided a way to survey passenger needs and wants, meet local unmet transit needs and, ultimately, provide the best possible fixed route service to the residents of Butte County based on resources available.

BCAG completed a Transit & Non-Motorized Plan in 2015, which includes an in-depth look at the current transit system and suggestions for future improvements.

Additional information regarding these studies can be found on BCAG's website at [www.bcag.org](http://www.bcag.org). BCAG continues to strive to provide the best possible service with available resources; and is dedicated to improving transportation services in the region.

## Chapter

# 4

## Community Outreach

Public Workshops for Unmet Transit Needs were held in Chico, Gridley and Oroville with a final public hearing before the Butte County Association of Governments Board of Directors. In the past, a workshop was always held in Paradise. However, because of the Camp Fire no meeting was scheduled in Paradise this year. In addition to published notices, the announcements were also placed on every transit vehicle in the B-Line fleet, announced on the company website and social networking page, <http://www.facebook.com/blinetransit>; and emailed to community social service agencies. See Appendix A for announcements and affidavits of publication. While only one public hearing is required, BCAG held four public workshops as well as a “formal” hearing before the BCAG Board of Directors Board during the month of March. In addition, BCAG solicited comments by telephone, e-mail and comment cards available on all buses.

## Analysis of Comments Received

### Definitions of “Unmet Transit Needs” and “Reasonable to Meet”

Transportation Development Act (TDA) law requires BCAG to adopt the definitions for the terms “unmet transit needs” and “reasonable to meet”. These definitions were adopted by the Butte County Association of Governments on April 21, 1994 and amended per recommendation of the Social Services Transportation Advisory Council on October 23, 2003. See Appendix C for BCAG Board of Director minutes approving adopted definitions of Unmet Needs.

In making a finding on whether or not an unmet need is reasonable to meet, BCAG analyzes whether all four evaluation criteria listed below are met. If one criterion is determined to make the request unreasonable to meet, there is no need to apply the other criteria.

#### **Unmet Transit Needs Definition**

Unmet Transit Needs are those trips required, but currently not provided, and not scheduled to be provided within Butte County for individuals dependent on public transit to maintain a minimum standard of living.

#### **Reasonable to Meet Definition**

Reasonable to meet shall include all of the following factors:

1. Cost Effectiveness: The cost to provide the service will meet the minimum farebox recovery ratio.
2. Economy: The project can be implemented at reasonable cost.
3. Community Acceptance: Support exists, indicated through the public hearing process.
4. Operational Feasibility: The service must be safe to operate.

#### **Possible Findings for Unmet Transit Needs Process by Board of Directors**

The Transportation Development Act Section 99401.5(d) states that the Board shall make one of the following findings:

1. There are no unmet transit needs;
2. There are no unmet transit needs that are reasonable to meet;

3. There are unmet transit needs, including needs that are reasonable to meet.

### Comments that are NOT defined as an "Unmet Transit Need"

Testimony in the following areas, by definition are **not** considered **unmet transit needs**. They may be legitimate concerns and/or comments and will be directed toward the appropriate departments for further consideration.

1. More bus shelters
2. Equipment issues (i.e. more bicycle racks, new vehicles, fareboxes)
3. Minor route modifications and/or modifications made for convenience
4. Connections outside the County
5. More frequent service

### Analysis Requirements and Assumptions

The farebox recovery ratio is the ratio of fares to operating costs for transit service. The minimum required ratio to implement a new service for urban fixed route is 20%. For rural fixed route and all paratransit services, the minimum ratio is 10%. These requirements are set by the Transportation Development Act.

#### DATA ASSUMPTIONS USED

BCAG used current available ridership and total fares received from July 2017 through the month of June 2018. The following data is used for the analysis to determine the minimum farebox recovery ratios. These figures are updated annually to reflect current conditions.

#### Farebox Recovery / Average fare per passenger (July 2017 – June 2018)

<u>System</u>	<u>Total Fares (fiscal audit)</u>	<u>Total Passengers</u>
B-Line Rural F.R.	\$487,592	314,008
B-Line Urban F.R.	\$753,764	765,210
<b>Total Fixed Route</b>	<b>\$1,241,356</b>	<b>1,079,218</b>
B-Line Rural Para	\$174,816	78,558
B-Line Urban Para	\$202,269	89,891
<b>Total Paratransit</b>	<b>\$377,085</b>	<b>168,449</b>

<u>System</u>	<u>Average Service Hour Cost</u>	<u>Average Fare / Passenger</u>
Fixed Route (F.R.)	\$89.04	\$ 1.12
Paratransit	\$71.80	\$ 2.16

## Analysis of Public Testimony

The following is testimony received during the 2018/19 fiscal year that was specifically reviewed for the Unmet Transit Needs process. All testimony received is individually looked at but some comments are too general in nature to be properly analyzed. Live testimony is summarized to state only the perceived unmet transit need. Similar comments are grouped together with a common response at the end of the grouping. Some testimony does not meet the definition for Unmet Transit Needs and will not be analyzed for the purpose of this document. However, this testimony has been forwarded on to the appropriate department for consideration and may be met through a different avenue or used for future planning efforts.

### **COMMENTS REGARDING SERVICE EXPANSION:**

- Service was requested to the Hegan Lane Business Park & University Farm area.

**FINDING → This is an Unmet Transit Need that is not Reasonable to Meet. Based on the estimated ridership generated it would not meet Criterion 1 – Cost Effectiveness; the revenues generated from providing the service would not meet the minimum farebox recovery ratio.**

- Service was requested between Chico and Sacramento.

**FINDING → This request does not meet the definition of an Unmet Transit Need as only needs within Butte County are considered. That being said, outside the Transit Needs process a study was conducted which determined some level of feasibility to providing weekday service between Butte County and Sacramento. Not being able to tap into local transit resources, a grant was applied for that would allow for the startup of such a service. However, that grant request was denied, so for the meantime that service is being shelved.**

### **STOPS/ROUTES REQUESTED:**

- Several requests for additional stops along current routes were received.

**FINDING → Requests for additional stops along existing routes, along with requests for shelters to be installed at existing stops, do not meet the definition of Unmet Transit Need, unless there are no stops available within a reasonable walking distance. On local routes, the average distance between B-Line bus stops is less than a quarter mile. Which means along the route, on average, a passenger is always within 250 yards of a stop. This being said, although not an unmet need, all requests for additional stops are considered from an operational viewpoint. One specific stop request was to relocate the Oroville Wal-Mart stop from the current location to within the parking lot. The current stop is quite a way from the store entrance. When the store was being build, B-Line approached the company about using their parking lot but was denied. Staff will check again if the company would be open to that.**

- Specific requests have come in for direct service on Route 20 between Oroville and the North County Courthouse in Chico.

**FINDING → This does not meet the definition of Unmet Transit Need since, with transfers, service to this location is currently available. However, that being said, although not an unmet need, the timing of the transfers involved can be given a closer look to see if they can be streamlined.**

- A specific request was received for a route from the owners of an apartment complex near Ivy and 11<sup>th</sup> in Chico.

**FINDING → This does not meet the definition of Unmet Transit Need since there is a current route, along with bus stops within a ¼ mile of the complex. With a stop this close, it is considered being served.**

- Bus should be able to use the red curbs in front of grocery stores to drop off passengers.

**FINDING → This is an operation issue and does not meet the definition of Unmet Transit Need. However, that being said, although not an unmet need, this idea would be considered from an operational viewpoint if allowed by city/county ordinances. Currently only emergency vehicles are allowed to utilize red zones.**

- In Oroville combine routes 25 & 27 into a single route and have routes 24 and 26 each operate with on its own route. This would reduce the waiting time and help the on-time performance of the Oroville routes.

**FINDING → This is an operation issue and does not meet the definition of Unmet Transit Need, since service already exists. However, that being said, although not an unmet need, this idea to improve the routing in Oroville is understandable. The main issue with this suggestion is that it would require another full vehicle to operate in Oroville, raising the total from two to three. Although this particular solution is not feasible, changes to improve the service in Oroville are currently being considered from an operational viewpoint and route modifications are being looked at.**

- Remove flag stop areas and place specific stops along those routes.

**FINDING → This is an operation issue and does not meet the definition of Unmet Transit Need, since service already exists. However, that being said, although not an unmet need, the idea will be given consideration.**



## ROUTE TIMES

- Would like service resumed on Route 31 between Paradise and Oroville.

**FINDING → This is currently an Unmet Need, based on the fact that the existing service was cut in light of the Camp Fire. There was one morning trip from Paradise to Oroville and one return trip in the evening. This is an Unmet Transit Need that is not Reasonable to Meet. Based on the limited number of people currently commuting between Paradise and Oroville, the estimated ridership generated it would not meet Criterion 1 – Cost Effectiveness; the revenues generated from providing the service would not meet the minimum farebox recovery ratio. Although at this time it does not meet the minimum standards, this route will be reviewed on a regular basis and when enough people repopulate Paradise, even if it is still a bit short of the needed ratio, the service will be reestablished. This will be done as soon as it is needed and not have to be incorporated into the Unmet Transit Needs process.**

- Would like better spacing of timing on Routes 40 & 41 between Chico and Paradise.

**FINDING → Requests for adjusted timing does not meet the definition of Unmet Transit Need, since service is currently available. However, that being said, the need for more efficient service is understood. Since the Camp Fire, the level of service on routes 40 & 41 were greatly modified. Restoring more service depends on several factors, the main one being the number of residents who move back into Paradise.**

## SUNDAY SERVICE:

- Need Sunday service in Chico

**FINDING → The need for transit service on Sundays is an Unmet Transit Need. It is not reasonable to meet due to Criterion 1 – Cost Effectiveness. Based on Saturday service passenger numbers and projected ridership on Sundays, the estimated farebox recovery ratio in Chico would be 8%. The required minimum farebox recovery ratio in Chico is 20%.**

## SATURDAY SERVICE:

- Would like service in the Oroville area on Saturdays.

**FINDING → Right now, minimal Saturday service is provided in Oroville via Regional Route 20. The need for localized Saturday service in Oroville is an unmet need that is not reasonable to meet based on Criterion 1 – Cost Effectiveness. Based on weekday service passenger numbers and projected ridership, the requested service would not meet the minimum farebox recovery ratio of 10%. The estimated farebox recovery ratio for Saturday service in Oroville is 5.79%.**

- Would like Saturday service on Route 7 in Chico.

**FINDING → The need for Saturday service in the Bruce Road/California Park area is a need that is not reasonable to meet based on Criterion 1 – Cost Effectiveness. Based on weekday service passenger numbers and projected ridership, the requested service would not meet the minimum farebox recovery ratio. Even the current weekday service is below the needed minimum ridership, so the route is active so that some service is available to that area. Saturday ridership is typically only about 60% of weekday service.**

**SPECIAL EVENTS:**

- Extend service hours during events, such as the Silver Dollar Fair, so people would be able to more fully partake in those events.

**FINDING → Requests for extended hours for special events does not meet the definition of Unmet Transit Need. However, that being said, if outside funding were provided to operate such a service the idea could be considered from an operational viewpoint.**

**EXTENDED SERVICE:**

- Would like later service in Oroville (weekdays).
- Would like later Saturday service in Chico.

**FINDING → Later weekday hours in the Oroville area and later Saturday hours in the Chico area are Unmet Transit Needs. However, these needs are not reasonable to meet based on Criterion 1 – Cost Effectiveness. Based on current ridership of the last three runs of the day and the fact that there are declining levels of ridership with each additional run, it is estimated that later runs will not meet the minimum farebox recovery ratio of 10% (in Oroville) and 20% (in Chico).**

---

## Unmet Transit Needs Findings and Recommendations

### Recommendations

After consideration of all testimony received during the 2017/18 fiscal year Unmet Transit Needs process, BCAG finds that there are no Unmet Transit Needs that are Reasonable to Meet. A recommendation to approve the Unmet Transit Needs Assessment for the 2018/19 fiscal year is made to the BCAG Board of Directors.

BCAG is committed to improving B-Line fixed route and paratransit service. As ridership data is gathered and public input is received, BCAG will continue to make route modifications, add bus shelters and make improvements to better serve the public, especially those who rely on transit. All testimony received is reviewed and considered for improving B-Line Transit regardless of whether or not the testimony fits the definitions used for the unmet transit needs process.

### Social Service Transportation Advisory Council Review

Government Code 99238 states, "Each transportation planning agency shall provide for the establishment of a social services transportation advisory council for each county operating under a joint power agreement, which is not subject to the apportionment restriction established in Section 99232." Committee members must include representation from senior citizens and disabled transit user groups, social service providers to seniors, disabled and low-income persons, transportation providers to seniors, disabled and low-income persons and CTSAs.

The 2018/2019 Transit Needs Assessment was presented to the Butte County Social Service Transportation Advisory Council on May 16, 2019. The Council reviewed the Assessment and unanimously supported staff's recommendation. See Appendix B for the current SSTAC membership roster.

**TABLE OF APPENDICES**

APPENDIX A  
Annual Unmet Transit Needs Meetings Schedule and Proof of Publications.....27

APPENDIX B  
Social Services Transportation Advisory Council Membership .....32

APPENDIX C  
BCAG Board of Directors Summary Minutes of October 23, 2003 Approving TDA Definitions  
for “Unmet Transit Needs” and “Reasonable to Meet” .....33

APPENDIX D  
2015/16 TDA Local Transportation Fund (LTF) and State Transit Assistance (STA) Fund Annual  
Project and Expenditure Plan Worksheets and Fund Distribution Charts by Jurisdiction..... 36

APPENDIX E  
Resolution of the Butte County Association of Governments Making Findings Regarding  
Unmet Transit Needs Affecting Fiscal Year 2019/2020 ..... 43

APPENDIX A

**PROOF OF PUBLICATIONS**



## Transit Taking You Where You Need to Go?

Butte County Association of Governments (BCAG) is requesting comments from the public on unmet transit needs. Members of the public are invited to submit comments by **mail, email, phone, fax, internet or in person** or at one of the below meetings. All testimony received is given equal consideration.

### Public Workshop Schedule

- **Oroville**  
Monday, **March 4, 2019**, 11:30 am – 12:30 pm  
~ City of Oroville Council Chambers ~ 1735 Montgomery Street
- **Gridley**  
Monday, **March 4, 2019**, 2:00 pm – 3:00 pm  
~ City of Gridley Community Room ~ 685 Kentucky Street
- **Chico CHICO & PARADISE RESIDENTS**  
Wednesday, **March 6, 2019**, 1:00 pm – 2:00 pm  
~ Butte County Library – Chico Branch ~ 1108 Sherman Avenue
- **Butte County**  
Thursday, **March 28, 2019**, 9:00 am ~ Public Hearing at BCAG Board Meeting  
~ BCAG Council Chambers ~ 326 Huss Drive, Chico

*Please note that workshops will not end until all comments have been received*

**Comments are due by 5:00 p.m. Thursday, March 28, 2019**

If you have comments and are unable to attend, please contact BCAG:

**Mail:** Butte County Association of Governments, 326 Huss Drive, Suite 150, Chico, CA 95928

**Email:** [jpeplow@bcag.org](mailto:jpeplow@bcag.org)

**Phone:** (530) 809-4616

**Fax:** (530) 891-2979

Si desea comentar las necesidades de B-Line, pero no habla inglés, por favor envíelas por correo o por correo electrónico a BCAG, y se traducirán para su consideración.

**Chico Enterprise-Record**

400 E. Park Ave.  
Chico, Ca 95928  
530-896-7702  
erlegal@chicoer.com  
2120552

BUTTE COUNTY ASSOCIATION OF GOVERNMENTS  
326 HUSS DR STE 150  
CHICO, CA 95928-8265

**IN THE SUPERIOR COURT OF THE  
STATE OF CALIFORNIA,  
IN AND FOR THE COUNTY OF BUTTE**

In The Matter Of

**AFFIDAVIT OF PUBLICATION**

STATE OF CALIFORNIA }  
COUNTY OF BUTTE } **SS.**

The undersigned resident of the county of Butte, State of California, says:

That I am, and at all times herein mentioned was a citizen of the United States and not a party to nor interested in the above entitled matter; that I am the principal clerk of the printer and publisher of

**The Chico Enterprise-Record  
The Oroville Mercury-Register**

That said newspaper is one of general circulation as defined by Section 6000 Government Code of the State of California, Case No. 26796 by the Superior Court of the State of California, in and for the County of Butte; that said newspaper at all times herein mentioned was printed and published daily in the City of Chico and County of Butte; that the notice of which the annexed is a true printed copy, was published in said newspaper on the following days:

**02/06/2019**

Dated February 06, 2019  
at Chico, California

  
\_\_\_\_\_  
(Signature)

Legal No. **0006289630**



**Transit Taking You Where You Need to**

Butte County Association of Governments (BCAG) is req comments from the public on unmet transit needs. Me of the public are invited to submit comments by mail, phone, fax, internet or in person or at one of the meetings. All testimony received is given equal consideration

**Public Workshop Schedule**

- **Oroville**  
Monday, **March 4, 2019**, 11:30 am - 12:30 pm  
~ City of Oroville Council Chambers ~ 1735 Montgomery
- **Gridley**  
Monday, March 4, 2019, 2:00 pm - 3:00 pm  
~ City of Gridley Community Room ~ 685 Kentucky Street
- **Chico CHICO & PARADISE RESIDENTS**  
Wednesday, **March 6, 2019**, 1:00 pm - 2:00 pm  
~ Butte County Library - Chico Branch ~ 1108 Sherman Av
- **Butte County**  
Thursday, **March 28, 2019**, 9:00 am  
~ Public Hearing at BCAG Board Meeting  
~ BCAG Council Chambers ~ 326 Huss Drive, Chico

*Please note that workshops will not end until all comments have been*

**Comments are due by 5:00 p.m. Thursday, March 28, 2019**

If you have comments and are unable to attend, please contact I

**Mail:** Butte County Association of Governments,  
326 Huss Drive, Suite 150, Chico, CA 95928

**Email:** jpeplow@bcag.org **Phone:** (530) 809-4616 **Fax:** (530) :

Si desea comentar las necesidades de B-Line, pero no habla i: por favor envíelas por correo o por correo electrónico a BCAG, traducirán para su consideración.



**AFFIDAVIT  
PROOF OF  
PUBLICATION**

No. \_\_\_\_\_

In The Matter of \_\_\_\_\_

UTN PUBLIC WORKSHOP SCHEDULE  
BUTTE COUNTY  
ASSOCIATION OF GOVERNMENTS

(State of California)  
(County of Butte) as  
The undersigned resident of the County of  
Butte, State of California, says:

That I am, and at all time herein mentioned  
was a citizen of the United States and not a party  
to nor interested in the above entitled matter;  
that I am the principal clerk of the printer and  
publisher of:

**The Gridley Herald**

That said newspaper is one of general  
circulation as defined by Section 6000  
Government Code of the State of California,  
Case No. 27207 by the Superior Court of the  
State of California, in and for the County of  
Butte; that said newspaper at all times herein  
mentioned was printed and published once a  
week on Fridays in the City of Gridley and  
County of Butte; that the notice of which the  
annexed is a true printed copy, was published in  
said newspaper on the following days:

**February 8, 2019**

I certify (or declare), under penalty of perjury,  
that the foregoing is true and correct, at Gridley,  
California.

Dated 2/8/19  
at Gridley, California

Natalie Miller  
(Signature)



**Transit Taking You Where You Need to Go?**

Butte County Association of Governments (BCAG) is requesting  
comments from the public on unmet transit needs. Members of  
the public are invited to submit comments by mail, email, phone,  
fax, internet or in person or at one of the below meetings. All  
testimony received is given equal consideration.

**Public Workshop Schedule**

- **Oroville**  
Monday, March 4, 2019, 11:30 am – 12:30 pm  
~ City of Oroville Council Chambers ~ 1735 Montgom-  
ery Street
- **Gridley**  
Monday, March 4, 2019, 2:00 pm – 3:00 pm  
~ City of Gridley Community Room ~ 685 Kentucky  
Street
- **Chico CHICO & PARADISE RESIDENTS**  
Wednesday, March 6, 2019, 1:00 pm – 2:00 pm  
~ Butte County Library – Chico Branch ~ 1108 Sherman  
Avenue
- **Butte County**  
Thursday, March 28, 2019, 9:00 am ~ Public Hearing at  
BCAG Board Meeting  
~BCAG Council Chambers ~ 326 Huss Drive, Chico

*Please note that workshops will not end until all comments have been received*  
**Comments are due by 5:00 p.m. Thursday, March 28, 2019**

If you have comments and are unable to attend, please contact BCAG:

**Mail:** Butte County Association of Governments,  
326 Huss Drive, Suite 150, Chico, CA 95928

**Email:** [jpeplow@bcag.org](mailto:jpeplow@bcag.org)

**Phone:** (530) 809-4616 **Fax:** (530) 891-2979

Si desea comentar las necesidades de B-Line, pero no habla inglés, por favor envíelas



This page left blank

## APPENDIX B

**Butte County Association of Governments  
2018-19 Social Services Transportation Advisory Council**

Name	Agency	Category Filled							Term ends
		1	2	3	4	5	6	7	
	# required→	2	4	5	5	4	2	0	
**Cindy Jones	Butte County Public Works						x		June 30, 2020
William Moline	Butte County DESS - CALWORKS					x			June 30, 2020
Debra Connors	Citizen-Chico	x							June 30, 2020
Marta De Los Santos	Mains'l Services Inc.		x	x	x				June 30, 2020
Cameron Wise	Work Training Center				x				June 30, 2021
Jeannie Schroeder	Mains'l Services Inc.			x	x	x			June 30, 2021
Michael Harding	We Care A lot Foundation/FNRC	x	x	x					June 30, 2021
Ron Ullman	Citizen - Oroville	x	x						June 30, 2021
Michael Brady	Disability Action Center	x	x	x					June 30, 2021
Michael Young									
Tara Sullivan	Butte 211			x	x	x			June 30, 2021
Radley Ott	Public Works						x		June 30, 2021
***Mary Neumann	Passage						x		June 30, 2021

*\*\*Upon separation of employment, BCAG will add a new employee with Butte Co. Public Works*

*\*\*\* Re-appointment application received late, added to roster after Board agenda distributed*

**Category Listings as per PUC Section 99238**

- 1 - potential transit user who is 60 years of age or older
- 2 - potential transit user who is disabled
- 3 - representatives of the local social service providers for seniors
- 4 - representatives of local social service providers for the disabled
- 5 - representatives of local social service provider for persons of limited means
- 6 - representatives from the local consolidated transportation service agency
- 7 - at-large appointment

\* Citizen nominated by a Jurisdiction

## APPENDIX C



### **SUMMARY MEETING MINUTES OF THE BUTTE COUNTY ASSOCIATION OF GOVERNMENTS OCTOBER 23, 2003**

The following minutes are a summary of actions taken by the Board of Directors. Audiocassette tape of the actual meeting is available for listening in BCAG's office.

Chair Andoe called the meeting to order at 9:08 a.m., in the Chico Municipal Building, Council Chambers located at 421 Main Street, Chico, CA.

#### **MEMBERS PRESENT:**

Robert Beeler	Supervisor	District 1
Jane Dolan	Supervisor	District 2
Mary Anne Houx	Supervisor	District 3
Kim Yamaguchi	Supervisor	District 5
Alan White	Councilmember	Town of Paradise
Gordon Andoe	Mayor	City of Oroville

#### **MEMBERS ABSENT:**

Curt Josiassen	Supervisor	District 4
Coleen Jarvis	Vice-Mayor	City of Chico
Andria Paul-Busch	Councilmember	City of Biggs
Frank Cook	Mayor	City of Gridley

#### **STAFF PRESENT:**

Jon Clark	Executive Director
Andy Newsum	Project Manager
Ivan Garcia	Programming Manager
Janice Fratallone	Senior Planner
Jim Peplow	Senior Planner
Cheryl Burton	Administrative Assistant

#### ***OTHERS PRESENT***

Steve Schoonover, Chico E-R  
Gail Williams, AQMD  
Chuck and Jeri Benedict, Citizens, TAC members  
Jim Rossas, Citizen, TAC member  
Al McGreehan, Town of Paradise, TAC member  
Bob Greenlaw, City of Chico, TAC member

#### **PLEDGE OF ALLEGIANCE**

#### **CONSENT AGENDA**

1. Approval of Minutes from the September 25, 2003 BCAG Board Meeting
2. Approval of 2003/04 LTF/STA Claim for the City of Biggs
3. Authorization for the BCAG Subcommittee for Programming & Policy issues to work with Executive Director on Annual Evaluation

On motion by Supervisor Houx, seconded by Supervisor Dolan, it was carried to approve Consent Agenda Items 1 through 3. Board member White abstained.

**BCAG Board Summary Minutes**  
**Meeting of 10-23-03**  
**Page two**

---

**ITEMS FOR ACTION**

**4. 2002 Regional Transportation Improvement Program (RTIP) Amendment**

Staff informed the Board that they are preparing an application for PLH discretionary funds to secure funding for the design component on the FH 171 (upper Skyway) project. The estimated cost of the FH 171 design is \$1.2 million.

Staff is proposing that \$600,000 in STIP funds be matched with \$600,000 in PLH discretionary funds to fund the FH 171 design component. The \$600,000 in STIP funds is available as a result of a previous amendment approved by the Board to exchange CMAQ funds for STIP funds on the SR 99 Durham/Pentz signalization & the SR 99 Gridley design widening projects.

Staff has reviewed this item with the Transportation Advisory Committee (TAC) and they support staff's proposal. Staff and the TAC recommend the Board program \$600,000 in RIP/STIP funds in 2004/05 FY by amending the 2002 RTIP.

Supervisor Yamaguchi asked if federal funds would likely be obtained? Staff indicated that it was optimistic that the federal funds could be obtained if there is \$600,000 in local matching support.

In March 2004, staff will attend the tri-agency meeting to lobby for the additional \$600,000 and go over the environmental schedule. Staff will work with Congressman Herger to secure the discretionary funds and lobby funds for the design component.

Staff informed the Board that at the public meeting in Stirling City, there was a representative from Federal Highways who indicated that the PLH program is focused on projects that have a lot of public support. It was apparent at the public meeting that this project is extremely important to the public and to the residents near the project area.

On motion by Board member White, seconded by Supervisor Yamaguchi, it was unanimously moved to approve the 2002 RTIP/STIP Amendment.

**5. 2002 Federal Transportation Improvement Program (FTIP) Amendment**

Insufficient funding in the state highway account is impacting Caltrans' ability to complete the environmental mitigation and will delay the construction on SR 149 until May 2005. Staff recommends the Board shift \$5.8 million in federal demo funds from the SR 70 Ophir Road and Marysville Bypass projects to the SR 149 project. An equal amount of STIP funds, \$5.8 million, will be shifted back to the SR 70 Ophir & Bypass projects. This shift doesn't change the delivery of the SR 70 projects and will ensure that the environmental mitigation for the SR 149 project is completed making the project ready for construction. The issue is cash flow. These federal funds were secured through Congressman Herger and are available now. Staff informed the Board they want to get as much done on SR 149 up to construction.

Supervisor Yamaguchi asked if the shifting of monies would hurt the other two projects? Staff replied that the projects would not be hurt or delayed. If the funds are shifted, mitigation can get done on SR 149 to make the project ready for construction when the funding is available.

On motion by Supervisor Yamaguchi, seconded by Board member White, it was unanimously moved to approve the 2002 FTIP Amendment.

**BCAG Board Summary Minutes**  
**Meeting of 10-23-03**  
**Page three**

---

**6. Approval of Transportation Development Act (TDA) Definitions for “Unmet Transit Needs” and “Reasonable to Meet”**

Staff informed the Board, that a main element of the unmet transit needs process is the definition of “Unmet Transit Needs” and “Reasonable to Meet.” This Board adopts the definitions that staff uses within the county. The current definitions were last adopted in 1994. The Social Services Transportation Advisory Committee (SSTAC) performed a comprehensive analysis of the definitions. The SSTAC recommended to amend the old definitions and make the new definitions more concise and easier to understand. By adopting the new definitions, it may be easier to find transit recommendations.

**On motion by Supervisor Beeler, seconded by Supervisor Yamaguchi, it was unanimously moved to approve the new definitions for “Unmet Transit Needs” and “Reasonable to Meet”.**

APPENDIX D

**2018/19 TDA Local Transportation Fund (LTF) and State Transit Assistance (STA) Fund Annual Project and Expenditure Plan Worksheets and Fund Distribution Charts by Jurisdiction**

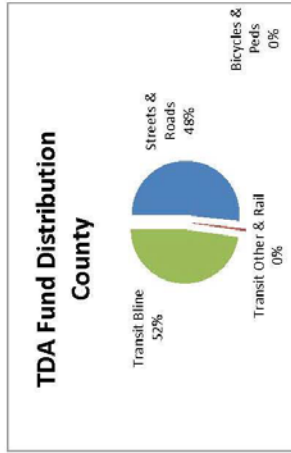
BUTTE COUNTY ASSOCIATION OF GOVERNMENTS  
**LOCAL TRANSPORTATION FUND (LTF) AND STATE TRANSIT ASSISTANCE (STA) FUND**  
**ANNUAL PROJECT AND EXPENDITURE PLAN**

Claimant: Butte County Public Works Fiscal Year: 2018/2019  
 Submitted: April 2019

TDA STATUTE DESCRIPTION & LOCAL AGENCY PROJECT TITLE	SOURCE OF FUNDING				TOTAL
	CLAIMED FUNDS		OTHER FUNDING SOURCES		
	TDA - LTF	PUC Article & Section	OTHER FUNDS	SOURCE	
Support of Public Transp System / B Line Ops. FIXED ROUTE	156,406	Art 4, Sec. 99260 (a)	670,063	Art 4, Sec 6730 (a)	862,367
Support of Public Transp System/ B Line Ops. PARATRANSIT	703,036	Art. 4, Sec. 99260 (a)	-	Art 4, Sec 6730 (a)	774,207
Transit Fund 0131 Administration-County's Support Services	9,493	Art.3, Sec 99233.1			9,493
Payment Under Contract for Public Transportation. Gridley Flyer	3,000	Art.8, 99400 (c)			3,000
Passenger Rail Service Amtrak-Chico	1,680	Art.8, 99400 (b)			1,680
Streets and Roads - Road Maintenance Incl. Transp. Planning	1,409,723	Art.8, 99402		Fund 0131 Balance	1,409,723
<b>SUB TOTAL</b>	<b>2,283,337</b>		<b>670,063</b>		<b>3,060,470</b>

Local Contact: Amanda Partain 538-7681 BCA-G- Ivan Garcia or Julie Quinn : 809-4616

18-19 APPORTIONMENTS		
LTF	STA	Total
2,283,337	670,063	2,953,400



TDA Revenue Classification:	2018 Beg Fund Balance	18/19 Revenue	18/19 Claimed	Estimated End Fund Balance
TDA Fund held by County:				
Transit STA 18-19 Apport	-	670,063	670,063	-
Transit LTF 18-19 Apport	-	873,614	873,614	-
Subtotal - Transit	-	1,543,677	1,543,677	-
Transportation LTF 18-19 Apport	(1,549)	1,409,723	1,409,723	(1,549)
<b>TOTAL TDA Fund</b>	<b>(1,549)</b>	<b>2,953,400</b>	<b>2,953,400</b>	<b>-</b>
<b>B Line Obligations:</b>	<b>18/19 Operating Obligation</b>	<b>17/18 Carryover Credit</b>	<b>18/19 Annual B-line Expense</b>	
Fixed Route	862,367	(35,898)	826,468	
Paratransit	774,207	(71,171)	703,036	
<b>Total</b>	<b>1,636,574</b>	<b>(107,070)</b>	<b>1,529,504</b>	

**Distribution Summary For FY 18/19 Apportioned Funds Only & for Pie Chart**

Transit Bline 1,529,504 (LTF & STA)  
 Transit Other & Rail 14,173 (LTF)  
 Bicycles & Peds - (LTF)  
 Streets & Roads 1,409,723 (LTF)  
**Total 2,953,400**

BUTTE COUNTY ASSOCIATION OF GOVERNMENTS  
**LOCAL TRANSPORTATION FUND (LTF) AND STATE TRANSIT ASSISTANCE (STA) FUND**  
**ANNUAL PROJECT AND EXPENDITURE PLAN**

Fiscal Year **2018/2019**  
 Submitted April 2019

Claimant: City of Biggs

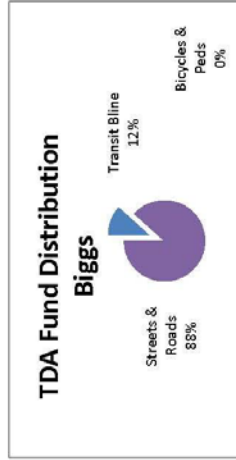
TDA STATE DESCRIPTION & LOCAL AGENCY PROJECT TITLE	SOURCE OF FUNDING				TOTAL
	CLAIMED FUNDS		OTHER FUNDING SOURCES		
	TDA - LTF	CLAIMED FUNDS TDA - STA	OTHER FUNDS	SOURCE	
Support of Public Transp System / B Line Ops. FIXED ROUTE	8,048	Art 8, Sec. 99400 (c)	531	17/18 Credit: \$4 Transit FB	8,579
Streets and Roads- Road Maintenance Incl. Transp. Planning	61,100	Art 8, 99402		Streets&Roads FB	61,100
<b>SUB TOTAL</b>	<b>69,148</b>		<b>531</b>		<b>69,679</b>

Local Contact: Mark Sorensen 868-5393

TDA Revenue Classification:	2018 Beg	18/19	18/19	Estimated End
	Fund Balance	Revenue	Claimed	Fund Balance
Transit Funding held by City:				
Transit- LTF 18-19 Apport	4	8,048	8,052	-
Transportation funding held by City:				
Transportation- LTF 18-19 Apport	159,586	61,100	61,100	159,586
<b>Total TDA Fund</b>	<b>159,590</b>	<b>69,148</b>	<b>69,152</b>	<b>159,596</b>
<b>B Line Obligations:</b>				
Fixed Route	8,579	17/18 Carryover	18/19 Annual B-	8,052
Paratransit	-	Credit	line Expense	-
<b>Total</b>	<b>8,579</b>	<b>(527)</b>	<b>(527)</b>	<b>8,052</b>

18-19 APPORTIONMENTS		
LTF	STA	Total
69,148	0 *	69,148

\* County/Biggs STA swap \$14,155



Distribution Summary For FY 18/19 Apportioned Funds Only & for Pie Chart

Transit Bline	8,048 (LTF)
Transit Other & Rail	-
Bicycles & Peds	-
Streets & Roads	61,100 (LTF)
<b>Total</b>	<b>69,148</b>



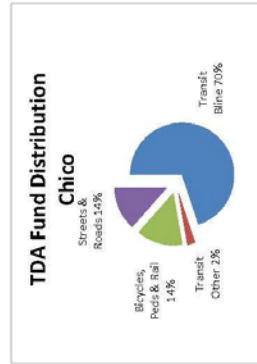
BUTTE COUNTY ASSOCIATION OF GOVERNMENTS  
**LOCAL TRANSPORTATION FUND (LTF) AND STATE TRANSIT ASSISTANCE (STA) FUND**  
**ANNUAL PROJECT AND EXPENDITURE PLAN**

Claimant: City of Chico Fiscal Year: 2018/2019  
 Submitted: April 2019

TDA STATUTE DESCRIPTION & LOCAL AGENCY PROJECT TITLE	SOURCE OF FUNDING				TOTAL
	CLAIMED FUNDS		OTHER FUNDING SOURCES		
	TDA - LTF	17/18 Carryover	OTHER FUNDS	SOURCE	
Support of Public Transp System / B Line Ops. FIXED ROUTE	869,493	Art 4. Sec. 39260 (a)	683,315	Art 4. Sec. 6730 (e)	1,584,245
Support of Public Transp System/ B Line Ops. PARATRANSIT	780,095	Art. 4. Sec. 39260 (a)	-	-	780,095
Support of Public Transp System/Transit Service (212-653)	27,262	Art 4. Sec. 39260 (a)	-	54,480	81,742
Passenger Rail Operations & Capital /Transp-Depot (212-658)	51,054	Article 8. 99400 (b)	-	-	51,054
Streets and Roads Claims /Planning and Planning Process Admin/ Indirect Cost (212-400) & (212-499)	69,473	Article 8. 99402	-	-	69,473
Projects for Pedestrians and Bicycles /Transportation (212-654)	86,319	Article 8. 99400 (e)	-	-	86,319
Streets and Roads Claims /Planning and Planning Process Transportation-Planning (212-655)	144,005	Article 8. 99402	-	-	144,005
Streets and Roads - Road Maintenance Incl. Transp. Planning (9001)	126,437	Article 8. 99402	-	-	126,437
Capital Projects (bike/ped) 12058. 50126. 50160. 50166. 50307. 50347	390,328	Article 8. 99400 (e)	-	605,292	995,620
Capital Projects (roads) 18907. 50378	110,250	Article 8. 99400 (e)	-	-	110,250
<b>SUB TOTAL</b>	<b>2,654,716</b>		<b>683,315</b>	<b>691,209</b>	<b>4,029,240</b>

Local Contact: Kathryn Mathus: xxxxxxxx BCA G - Ivan Garcia or Julie Quinn : 809-4616

18/19 APPORTIONMENTS		
LTF	STA	Total
2,654,716	683,315	3,338,031



TDA Revenue Classification:	2018 Beg Fund Balance	18/19 Revenue	18/19 Claimed	Estimated End Fund Balance
Transportation Fund held by City:	-	683,315	683,315	-
Transit STA 18-19 Apport	55,890	1,727,904	1,727,904	55,890
Subtotal Transit/ Rail	55,890	2,411,219	2,411,219	55,890
Transportation LTF 18-19 Apport	1,747,285	926,812	1,532,104	1,141,993
<b>Total Transportation Fund</b>	<b>1,803,175</b>	<b>3,338,031</b>	<b>3,943,323</b>	<b>1,197,883</b>
<b>B Line Obligations:</b>	<b>18/19 Operating Obligation</b>	<b>17/18 Carryover Credit</b>	<b>18/19 Annual B-line Expense</b>	
Transit Bline	2,332,903	(3,1437)	1,552,808	
Transit Other & Rail	1,584,245		780,095	
Bicycles & Peds	2,364,340	(3,1437)	2,332,903	
<b>Total</b>				

**Distribution Summary For FY 18/19 Apportioned Funds Only & for Pie Chart**

- Transit Bline 2,332,903 (LTF & STA)
- Transit Other & Rail 78,316 (LTF)
- Bicycles & Peds 476,647 (LTF)
- Streets & Roads 450,165 (LTF)
- Total 3,338,031**

BUTTE COUNTY ASSOCIATION OF GOVERNMENTS  
**LOCAL TRANSPORTATION FUND (LTF) AND STATE TRANSIT ASSISTANCE (STA) FUND**  
**ANNUAL PROJECT AND EXPENDITURE PLAN**

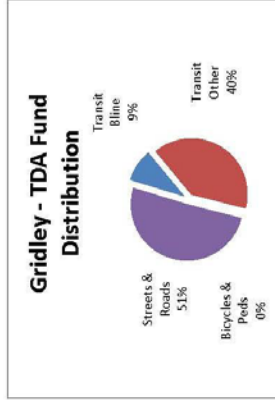
Claimant: City of Gridley Fiscal Year 2018/2019  
 Submitted April 2019

TDA STATUTE DESCRIPTION & LOCAL AGENCY PROJECT TITLE	SOURCE OF FUNDING				TOTAL
	CLAIMED FUNDS		OTHER FUNDING SOURCES		
	TDA - LTF	PUC Article & Section	OTHER FUNDS	SOURCE	
Support of Public Transp System / B Line Ops. FIXED ROUTE (430-4434)	23,281	Article 8, 99400(c)	1,488	17/18 Credit Farebox/ Subsidies	24,769
Support of Public Transp System / Gridley Golden Flyer (700)	100,200	Article 4, 99260 (a)	19,000		119,200
Streets and Roads Maintenance (430)	127,265	Article 8, 99402			127,265
<b>SUB TOTAL</b>	<b>250,746</b>		<b>20,488</b>		<b>271,234</b>

Local Contact: Ishrat Khan 846-5685 BCAG; Ivan Garcia or Julie Quimr 809-4616

18-19 APPORTIONMENTS	
LTF	250,746
STA	-
<b>Total</b>	<b>250,746</b>

\* County/Gridley STA swap \$51,329



TDA Revenue Classification:	2018 Beg		18/19		Estimated End Fund Balance
	Fund Balance	Revenue	Claimed	18/19	
<b>TDA Fund held by City:</b>					
Transit- LTF 18-19 Apport	-	23,281	23,281	-	-
Transportation- LTF 18-19 Apport	577,737	127,265	127,265	577,737	577,737
<b>Total TDA Fund</b>	<b>577,737</b>	<b>150,546</b>	<b>150,546</b>	<b>577,737</b>	<b>577,737</b>
<b>Taxi Fund Balance held by City:</b>					
Transit- LTF 18-19 Apport	-	100,200	100,200	-	-
<b>Reserved for Capital</b>	<b>-</b>	<b>-</b>	<b>-</b>	<b>-</b>	<b>-</b>
<b>Total Taxi Fund</b>	<b>-</b>	<b>100,200</b>	<b>100,200</b>	<b>-</b>	<b>-</b>
<b>B Line Obligations:</b>					
Fixed Route	18/19 Operating Obligation	17/18 Carryover Credit	18/19 Annual B-Line Expense		
	24,769	(1,488)	23,281		
<b>Total</b>	<b>24,769</b>	<b>(1,488)</b>	<b>23,281</b>	<b>23,281</b>	<b>23,281</b>

Distribution Summary For FY 18/19 Apportioned Funds Only & for Pie Chart

Transit Bline	23,281 (LTF)
Transit Other	100,200 (LTF)
Bicycles & Peds	-
Streets & Roads	127,265 (LTF)
<b>Total</b>	<b>250,746</b>

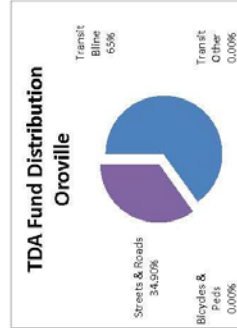
BUTTE COUNTY ASSOCIATION OF GOVERNMENTS  
**LOCAL TRANSPORTATION FUND (LTF) AND STATE TRANSIT ASSISTANCE (STA) FUND**  
**ANNUAL PROJECT AND EXPENDITURE PLAN**

Claimant: City of Oroville Fiscal Year 2018/2019 Submitted April 2019

TDA STATUTE DESCRIPTION & LOCAL AGENCY PROJECT TITLE	SOURCE OF FUNDING				TOTAL
	CLAIMED FUNDS		OTHER FUNDING SOURCES		
	TDA - LTF LTF \$ amount	PUC Article & Section	CLAIMED FUNDS TDA - STA STA \$ amount	OTHER FUNDS CCR Section	
Support of Public Transp System / B Line Ops. FIXED ROUTE	92,374	Art 8, Sec. 99400 (C)	134,254	Article 4 6731(0)	241,466
Support of Public Transp System/ B Line Ops. PARATRANSIT	204,155	Art. 8, Sec. 99400 (C)			361,595
Streets and Roads Claims- Mesa Ave	225,054	Article 8, 99402			236,892
Streets and Roads Claims- Myers St					169,889
Streets and Roads Claims- Kilrick Ave					101,456
Streets and Roads Claims- Oro Bangor Hwy					137,871
Streets and Roads Claims- Nelson					458,733
Streets and Roads Claims- Greenville St					152,236
<b>SUB TOTAL</b>	<b>521,583</b>		<b>134,254</b>		<b>1,800,128</b>

Local Contact: Ruth Wright 538-2412 BCAG: Ivan Garcia or Julie Oulm 809-4616  
 Consultant - Mike Massaro

18-19 APPORTIONMENTS		
LTF	521,583	
STA	134,254	
<b>Total</b>	<b>655,837</b>	



TDA Revenue Classification:	2018 Beg Fund Balance	18/19 Revenue	18/19 Claimed	Estimated End Fund Balance
Transit Fund held by City:				
Transit STA 17-18 Apport		134,254	134,254	-
Transit LTF 17-18 Apport	91,734	296,529	388,263	-
Subtotal Transit Fund	91,734	430,783	522,517	-
Streets & Roads Fund held by City:				
Transportation LTF 17-18 Apport	572,996	225,054	646,108	151,942
<b>Total TDA Funds</b>	<b>664,730</b>	<b>655,837</b>	<b>1,168,625</b>	<b>151,942</b>
<b>B Line Obligations:</b>	<b>18/19 Operating Obligation</b>	<b>17/18 Carryover Credit</b>	<b>18/19 Annual B-line Expense</b>	
Fixed Route	241,466	(14,838)	226,629	
Paratransit	361,595	(65,696)	295,899	
<b>Total</b>	<b>603,061</b>	<b>(80,534)</b>	<b>522,527</b>	

**Distribution Summary For FY 18/19 Apportioned Funds Only & for Pie Chart**  
 Transit Bline 430,783 (LTF & STA)  
 Transit Other -  
 Bicycles & Paths -  
 Streets & Roads 225,054 (LTF)  
**Total 655,837**

BUTTE COUNTY ASSOCIATION OF GOVERNMENTS  
**LOCAL TRANSPORTATION FUND (LTF) AND STATE TRANSIT ASSISTANCE (STA) FUND**  
**ANNUAL PROJECT AND EXPENDITURE PLAN**

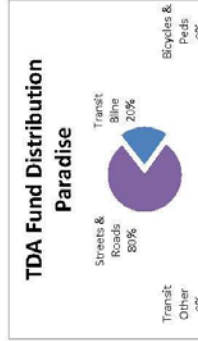
Claimant: Town of Paradise Fiscal Year 2018/2019 Submitted April 2019

TDA STATUTE DESCRIPTION & LOCAL AGENCY PROJECT TITLE	SOURCE OF FUNDING						TOTAL
	CLAIMED FUNDS		CLAIMED FUNDS		OTHER FUNDING SOURCES		
	TDA - LTF	PUC Article & Section	TDA - STA	CCR Section	OTHER FUNDS	SOURCE	
Support of Public Transp System/ B Line Ops. <b>FIXED ROUTE</b>	-	Art 8, Sec. 994.00 (c)	107,633	Art 4, Sec 6731 (b)	11,182	17/18 Credit	118,815
Support of Public Transp System/ B Line Ops. <b>PARATRANSIT</b>	-	Art 8, Sec. 994.00 (c)	88,983	Art 4, Sec 6731 (b)	451,484	17/18 Credit, S324,616 Fund Balance F-5900	550,467
Streets and Roads- Administration & Planning process	22,122	Art 8, 994.02	-		-		22,122
Streets and Roads- Almond Multi-modal (CIP 9377)	1,000	Art 8, 994.02					1,000
Streets and Roads- Memorial Trailway Enhancements (CIP 9379)	5,000	Art 8, 994.02					5,000
Streets and Roads- Downtown Equal Mobility (CIP 9379)	65,000	Art 8, 994.02					65,000
Streets and Roads- Ponderosa Safe Routes to School (CIP 9380)	2,500	Art 8, 994.02					2,500
Streets and Roads- Skyway at Black Olive Signal (CIP 9382)	3,000	Art 8, 994.02					3,000
Streets and Roads- Systemic Safety Analysis (CIP 9384)	11,201	Art 8, 994.02					11,201
Streets and Roads - TBD post clean up	654,039	Art 8, 994.02					654,039
<b>SUB TOTAL</b>	<b>763,862</b>		<b>196,616</b>		<b>472,666</b>		<b>1,433,144</b>

Gina Will 872-6291 x119 gwill@townofparadise.com BCAG: Ivan Garcia or Julie Quinn 809-4616

18-19 APPORTIONMENTS		
LTF	STA	Total
763,862	196,616	960,478

TDA Revenue Classification:	2018 Beg	18/19	18/19	Estimated End
	Fund Balance	Revenue	Claimed	Fund Balance
Transit STA 17-18 Apport	-	196,616	196,616	-
Transit LTF 17-18 Apport	353,516	-	324,616	28,900
<b>Total Transit Fund</b>	<b>353,516</b>	<b>196,616</b>	<b>521,232</b>	<b>28,900</b>
Transportation- LTF 17-18 Apport	15,094	763,862	763,862	15,094
<b>Total Transportation Fund</b>	<b>-</b>	<b>763,862</b>	<b>763,862</b>	<b>15,094</b>
<b>Total TDA</b>	<b>353,516</b>	<b>960,478</b>	<b>1,285,094</b>	<b>43,994</b>
<b>B Line Obligations:</b>	<b>18/19 Operating Obligation</b>	<b>17/18 Carryover Credit</b>	<b>18/19 Annual B-line Expense</b>	
Fixed Route	118,815	(11,182)	107,633	
Paratransit	550,467	(136,868)	413,599	
<b>Total</b>	<b>669,282</b>	<b>(148,050)</b>	<b>521,232</b>	



Distribution Summary For FY 18/19 Apportioned Funds Only & for Pie Chart

Transit B-Line	196,616 (LTF & STA)
Transit Other	-
Bicycles & Peds	-
Streets & Roads	763,862 (LTF)
<b>Total</b>	<b>960,478</b>

APPENDIX E

**Resolution of the Butte County Association of Governments  
Making Findings Regarding Unmet Transit Needs Affecting Fiscal  
Year 2019/20**



**BUTTE COUNTY ASSOCIATION OF GOVERNMENTS  
RESOLUTION NO 2018/2019-18**



---

**RESOLUTION OF THE BUTTE COUNTY ASSOCIATION OF GOVERNMENTS  
MAKING FINDINGS REGARDING UNMET TRANSIT NEEDS AFFECTING FISCAL  
YEAR 2019-2020**

**WHEREAS**, Public Utilities Code Section 99401.5 requires that prior to making any allocation of Transportation Development Act funds not directly for public transportation purposes, that any unmet transit needs that are reasonable to meet shall be funded;

**WHEREAS**, the Butte County Association of Governments has adopted definitions of “unmet transit needs” and “reasonable to meet”;

**WHEREAS**, Public Utilities Code Section 99401.5 specifically describes the procedures required prior to making the unmet transit needs findings;

**WHEREAS**, the Butte County Association of Governments has complied with all required procedures, including establishment and consultation with the Social Services Transportation Advisory Council, preparation of an Unmet Transit Needs Assessment, and the solicitation of public input, including a public hearing;

**WHEREAS**, the Butte County Association of Governments is required to make one of three findings:

1. There are no unmet transit needs,
2. There are no unmet transit needs that are reasonable to meet,
3. There are unmet transit needs, including needs that are reasonable to meet;

**WHEREAS**, it has been determined that **there are no unmet transit needs that are reasonable to meet** for B-Line fixed route service;

**NOW THEREFORE BE IT RESOLVED** that based on the definitions of “unmet transit needs” and “reasonable to meet” adopted by the Board of Directors on October 23, 2003 and the 2019/2020 Unmet Transit Needs Assessment, and in accordance with the recommendation of the Social Services Transportation Advisory Council, the Butte County Association of Governments finds that there are no unmet transit need that are reasonable to meet for B-Line fixed route service.

**PASSED AND ADOPTED** by the Butte County Association of Governments on the 23<sup>rd</sup> day of May 2019 by the following vote:

**AYES:** Connelly, Lucero, Wilkinson, Ritter,  
Borges, Jones, Stone, Teeter, Lambert

**NOES:** None

**ABSENT:** Reynolds

**ABSTAIN:** None

**APPROVED:**



\_\_\_\_\_  
BILL CONNELLY, CHAIR  
BUTTE COUNTY ASSOCIATION OF GOVERNMENTS

**ATTEST:**



\_\_\_\_\_  
JON A. CLARK, EXECUTIVE DIRECTOR  
BUTTE COUNTY ASSOCIATION OF GOVERNMENTS